




**ACCESSORIES  
FOR LIGHTNING PROTECTION SYSTEMS**




# CERTIFICATES



**STOWARZYSZENIE ELEKTRYKÓW POLSKICH  
BIURO BADAWCZE DS. JAKOŚCI**

04-703 Warszawa, ul. Mieczysława Pożaryskiego 28  
tel.: +48 22 812 69 38; fax: +48 22 815 65 80; e-mail: bbj@bbj.pl



SEP - BBJ

SEP - BBJ

SEP - BBJ

SEP - BBJ

**CERTYFIKAT ZGODNOŚCI Z**  
CERTIFICATE OF CONFORMITY Z

nr Z/12/048/20  
No. Z/12/048/20

**Dostawca:** „ALPAR” Artur i Piotr Kowalscy Spółka Jawna  
(Nazwa i adres)  
Supplier: Łuczynów 98  
(Name and address) 26-900 Kozienice, Poland

**Producent:** „ALPAR” Artur i Piotr Kowalscy Spółka Jawna  
(Nazwa i adres)  
Manufacturer: Łuczynów 98  
(Name and address) 26-900 Kozienice, Poland

**Nazwa wyrobu:** Elementy urządzenia piorunochronnego (LPSC).  
Elementy połączeniowe. Uchwyty krzyżowe usiłow.  
Lightning Protection System Components (LPSC).  
Connection components. Earthing cross connectors.

**Typ (model):** UKU  
Numer katalogowy: G9033; G9043; G9053.

**Dane techniczne:** Materiał: Stal cynkowana ognioowo;  
Klasa: H.  
Class: H.


**Typ programu certyfikacji:** 1a według PN-EN ISO/IEC 17067  
1a according to PN-EN ISO/IEC 17067

Próbka wymienionego wyżej wyrobu została zbadana i uznana, jako spełniająca wymagania norm(y) i/lub dokumentów normatywnych:  
A sample of the addressed product was tested and found to be in conformity with the requirement of the standard(s) and/or normative document:





Norma(-y) i/lub dokumenty normatywne Standard(s) and/or normative documents	Raport(-y) z badań nr Test report(s) No.	Wydany(-e) przez Issued by
PN-EN 62561-1:2017-07 (EN 62561-1:2017)	LA-20.101/20.055	SEP - BBJ

Raport z badań stanowi integralną część niniejszego certyfikatu  
Test Report forms integral part of this Certificate

**Kierownik Jednostki Certyfikującej**  
Certification Body Manager



Andrzej Rybski

Warszawa, 2020-12-21

AC 012



**STOWARZYSZENIE ELEKTRYKÓW POLSKICH  
BIURO BADAWCZE DS. JAKOŚCI**

04-703 Warszawa, ul. Mieczysława Pożaryskiego 28  
tel.: +48 22 812 69 38; fax: +48 22 815 65 80; e-mail: bbj@bbj.pl



SEP - BBJ

SEP - BBJ

SEP - BBJ

SEP - BBJ

**CERTYFIKAT ZGODNOŚCI Z**  
CERTIFICATE OF CONFORMITY Z

nr Z/12/022/21  
No. Z/12/022/21

**Dostawca:** „ALPAR” Artur i Piotr Kowalscy Spółka Jawna  
(Nazwa i adres)  
Supplier: Łuczynów 98  
(Name and address) 26-900 Kozienice, Poland

**Producent:** „ALPAR” Artur i Piotr Kowalscy Spółka Jawna  
(Nazwa i adres)  
Manufacturer: Łuczynów 98  
(Name and address) 26-900 Kozienice, Poland

**Nazwa wyrobu:** Elementy urządzenia piorunochronnego (LPSC).  
Elementy połączeniowe. Słupki krzyżowe.  
Lightning Protection System Components (LPSC).  
Connection components. Cross connectors.

**Typ (model):** G9033N; G9043N; G9053N.

**Dane techniczne:** Materiał: Stal nierdzewna  
Klasa: H.  
Class: H.

**Typ programu certyfikacji:** 1a według PN-EN ISO/IEC 17067  
1a according to PN-EN ISO/IEC 17067

Próbka wymienionego wyżej wyrobu została zbadana i uznana, jako spełniająca wymagania norm(y) i/lub dokumentów normatywnych:  
A sample of the addressed product was tested and found to be in conformity with the requirement of the standard(s) and/or normative document:

Norma(-y) i/lub dokumenty normatywne Standard(s) and/or normative documents	Raport(-y) z badań nr Test report(s) No.	Wydany(-e) przez Issued by
PN-EN 62561-1:2017-07 (EN 62561-1:2017)	LA-21.040/21.014	SEP - BBJ

Raport z badań stanowi integralną część niniejszego certyfikatu  
Test Report forms integral part of this Certificate

**Kierownik Jednostki Certyfikującej**  
Certification Body Manager



Andrzej Rybski






Warszawa, 2021-06-10

AC 012



**STOWARZYSZENIE ELEKTRYKÓW POLSKICH  
BIURO BADAWCZE DS. JAKOŚCI**

04-703 Warszawa, ul. Mieczysława Pożaryskiego 28  
tel.: +48 22 812 69 38; fax: +48 22 815 65 80; e-mail: bbj@bbj.pl



SEP - BBJ

SEP - BBJ

SEP - BBJ

SEP - BBJ

**CERTYFIKAT ZGODNOŚCI Z**  
CERTIFICATE OF CONFORMITY Z

nr Z/12/049/20/A2  
No. Z/12/049/20/A2

**Dostawca:** „ALPAR” Artur i Piotr Kowalscy Spółka Jawna  
(Nazwa i adres)  
Supplier: Łuczynów 98  
(Name and address) 26-900 Kozienice, Poland

**Producent:** „ALPAR” Artur i Piotr Kowalscy Spółka Jawna  
(Nazwa i adres)  
Manufacturer: Łuczynów 98  
(Name and address) 26-900 Kozienice, Poland

**Nazwa wyrobu:** Elementy urządzenia piorunochronnego (LPSC).  
Słupki pionowe, złączki usiłow pionowych.  
Lightning Protection System Components (LPSC).  
Earth rods, couplers for earth rods.

**Typ (model):**

Typ: Type:	UP16	UP18	UP20
Numer katalogowy: Catalog number:	G9032	G9042	G9052

**Dane techniczne:** Materiał: Stal cynkowana ognioowo;  
Klasa: H.  
Class: H.

**Typ programu certyfikacji:** 1a według PN-EN ISO/IEC 17067  
1a according to PN-EN ISO/IEC 17067

Próbka wymienionego wyżej wyrobu została zbadana i uznana, jako spełniająca wymagania norm(y) i/lub dokumentów normatywnych:  
A sample of the addressed product was tested and found to be in conformity with the requirement of the standard(s) and/or normative document:

Norma(-y) i/lub dokumenty normatywne Standard(s) and/or normative documents	Raport(-y) z badań nr Test report(s) No.	Wydany(-e) przez Issued by
PN-EN IEC 62561-2:2018-04 (EN IEC 62561-2:2018)	LA-20.102/20.056	SEP - BBJ

Raport z badań stanowi integralną część niniejszego certyfikatu  
Test Report forms integral part of this Certificate

**Kierownik Jednostki Certyfikującej**  
Certification Body Manager



Andrzej Rybski






Warszawa, 2021-03-31

AC 012

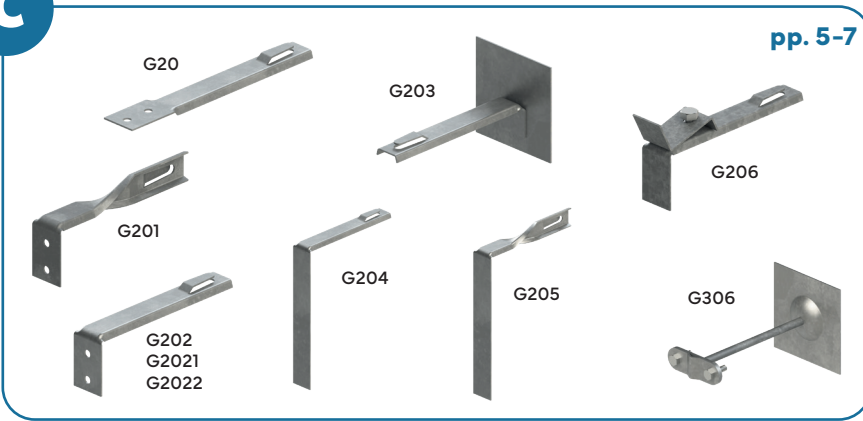
Firma nagrodzona Złotą Odznaką Honorową SEP  
Company granted with SEP Gold Honour Award

Firma nagrodzona Złotą Odznaką Honorową SEP  
Company granted with SEP Gold Honour Award

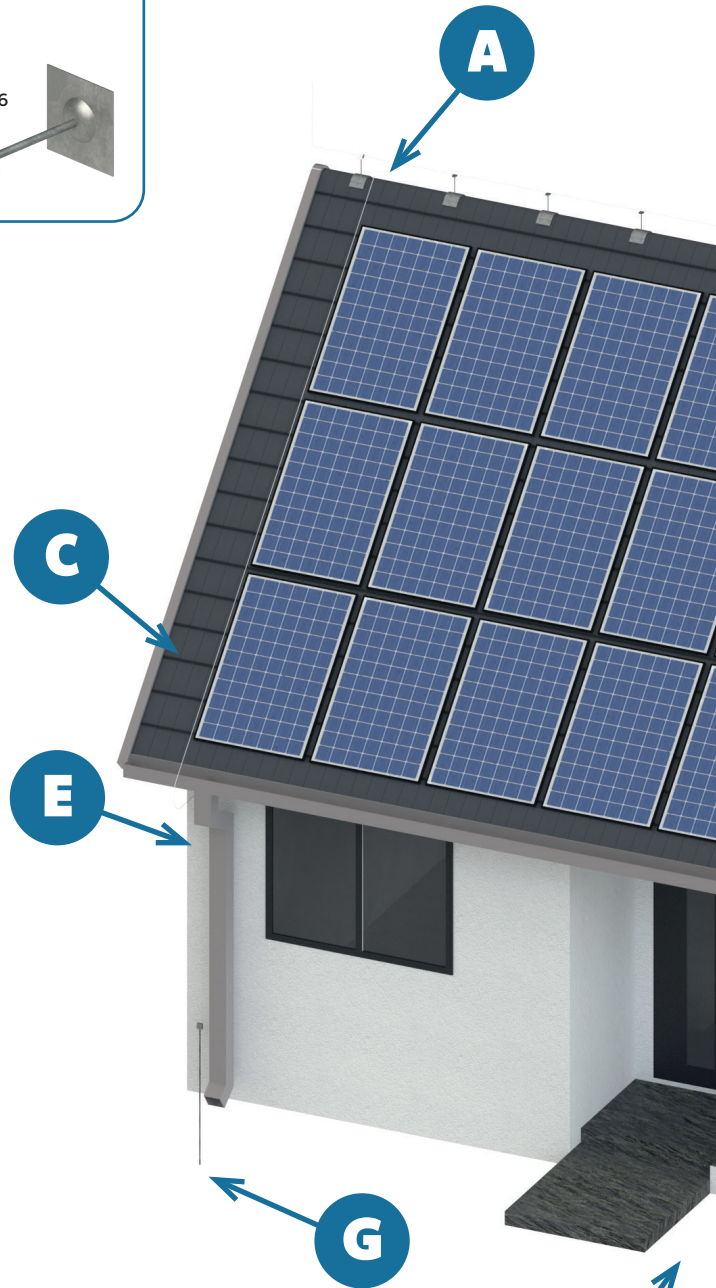
Firma nagrodzona Złotą Odznaką Honorową SEP  
Company granted with SEP Gold Honour Award

# ***Lightning protection system components***

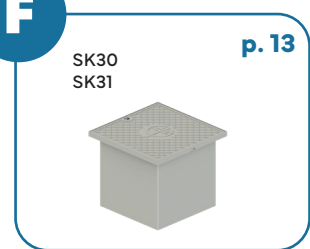
C



E



F



F

**A**



**B**



**B**

**D**



**G**



2

A

### Universal ridge tile holder

G102

**Application:**

Used for attaching of the lightning conductor on roof gables, fixed to the ridge tile by screwing.

Cat. no.	Name	Weight [kg]
G102	Universal ridge tile holder	0.202
G103	DEHN ridge tile holder	0.142

**Material:** S235 steel**Protection:** hot-dip galvanized

### Universal roof ridge holder

G104

**Application:**

Used for attaching of the lightning conductor on the ridges of buildings.

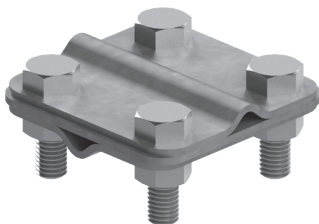
Cat. no.	Name	Weight [kg]
G104	Universal roof ridge holder	0.349

**Material:** S235 steel**Protection:** hot-dip galvanized

B

### Four-bolt cross clamp with spacer

G401

**Application:**

In lightning protection system connections.  
Cross-connecting of round or flat steel tapes; maximum tape width: 35 mm.

Cat. no.	Name	Weight [kg]
G401	Four-bolt cross clamp with spacer	0.223

**Material:** S235 steel**Protection:** hot-dip galvanized

*Universal two-piece connector*

G702



**Application:**

In lightning protection system connections. Cross, double-outlet, and branched connections of the lightning conductor wire.

Cat. no.	Name	Weight [kg]
G702	Universal two-piece connector	0.084

**Material:** S235 steel

**Protection:** hot-dip galvanized



*Straight lightning conductor clamp*

G20



**Application:**

Used to attach the lightning conductor on roofs to a vertical surface.

Cat. no.	Name	Weight [kg]
G20	L-150 straight lightning conductor conductor clamp	0.084

**Material:** S235 steel

**Protection:** hot-dip galvanized

*Twisted angled lightning conductor clamp*

G201



**Application:**

Used to attach the lightning conductor on roofs to a horizontal surface.

Cat. no.	Name	Weight [kg]
G201	L-150 twisted angled lightning conductor conductor clamp	0.073

**Material:** S235 steel

**Protection:** hot-dip galvanized

### Angled lightning conductor clamp

G202



**Application:**

Used to attach the lightning conductor on roofs to a horizontal surface.

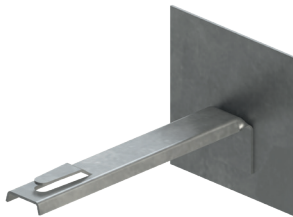
Cat. no.	Name	Weight [kg]
G202	L-150 angled lightning conductor conductor clamp	0.079
G2021	L-200 angled lightning conductor conductor clamp	0.090
G2022	L-250 angled lightning conductor conductor clamp	0.118

**Material:** S235 steel

**Protection:** hot-dip galvanized

### Angled lightning conductor clamp for bitumen roofing

G203



**Application:**

Used to attach the lightning conductor on flat roofs.

Cat. no.	Name	Weight [kg]
G203	L-150 angled lightning conductor conductor clamp for bitumen roofing	0.168

**Material:** S235 steel

**Protection:** hot-dip galvanized

### Extended angled lightning conductor clamp

G204



**Application:**

Used to attach the lightning conductor on flat or tiled roofs.

Cat. no.	Name	Weight [kg]
G204	L-150 extended angled lightning conductor conductor clamp	0.137

**Material:** S235 steel

**Protection:** hot-dip galvanized

*Twisted extended angled lightning conductor clamp*

G205



**Application:**

Used to attach the lightning conductor on flat or tiled roofs.

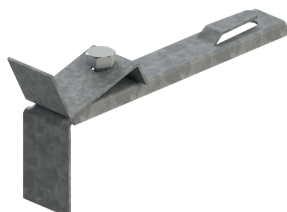
Cat. no.	Name	Weight [kg]
G205	L-150 twisted extended angled lightning conductor conductor clamp	0.127

**Material:** S235 steel

**Protection:** hot-dip galvanized

*Angled lightning conductor clamp with bolt fastener*

G206



**Application:**

Used to attach the lightning conductor without drilling holes.

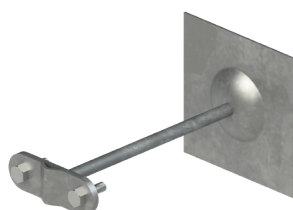
Cat. no.	Name	Weight [kg]
G206	L-150 angled lightning conductor conductor clamp with bolt fastener	0.133

**Material:** S235 steel

**Protection:** hot-dip galvanized

*Universal conductor clamp for bitumen roofing*

G306



**Application:**

Used to attach the lightning conductor on flat roofs. L-200, L-250, L-300 conductor clamps can be made to order.

Cat. no.	Name	Weight [kg]
G306	L-150 universal conductor clamp for bitumen roofing	0.240

**Material:** S235 steel

**Protection:** hot-dip galvanized

## Straight lightning conductor clamp for gutter

G207



### Application:

Used to attach the lightning conductor to gutters.

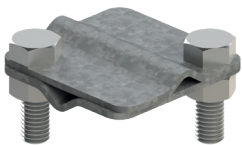
Cat. no.	Name	Weight [kg]
G207	L-150 straight lightning conductor conductor clamp for gutter	0.122

**Material:** S235 steel

**Protection:** hot-dip galvanized

## Two-bolt connector with spacer

G402



### Application:

In lightning protection system connections.

Cross-connecting of round or flat steel tapes; maximum tape width: 35 mm.

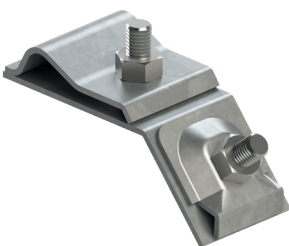
Cat. no.	Name	Weight [kg]
G402	Two-bolt cross clamp	0.107

**Material:** S235 steel

**Protection:** hot-dip galvanized

## Gutter connector

G601



### Application:

In lightning protection system connections.

Used to attach the lightning conductor vertically or horizontally on the edge of the gutter.

Cat. no.	Name	Weight [kg]
G601	Gutter connector	0.154

**Material:** S235 steel

**Protection:** hot-dip galvanized

Hollow lightning rod base

G3091



**Application:**

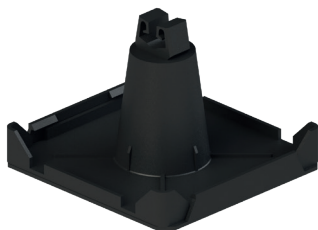
Used to attach the lightning conductor with a diameter of Ø6 and Ø8 mm. It has a universal method of attaching cables of both diameters. It can be attached with adhesives, bitumen or screws.

Cat. no.	Name	Weight [kg]
G3091	Hollow lightning rod base	0.090

**Material:** UV-resistant and weatherproof plastic

Dach-Bud universal conductor clamp

G3081



**Application:**

Used to attach the lightning conductor on flat roofs. It can be attached with screws, adhesives or bitumen.

Cat. no.	Name	Weight [kg]
G3081	Dach-Bud universal conductor clamp	0.056

**Material:** UV-resistant and weatherproof plastic



Drive-in universal conductor clamp

G30



**Application:**

Used to connect lightning round or flat steel tapes on the walls of a building.

Cat. no.	Name	Weight [kg]
G30	L-150 drive-in universal conductor clamp	0.125
G301	L-200 drive-in universal conductor clamp	0.151
G302	L-250 drive-in universal conductor clamp	0.164

**Material:** S235 steel

**Protection:** hot-dip galvanized

### Drive-in universal conductor clamp with expansion plug

G303



**Application:**

Used to connect lightning round or flat steel tapes on the walls of a building.

Cat. no.	Name	Weight [kg]
G303	L-150 drive-in universal conductor clamp with expansion plug	0.118
G304	L-200 drive-in universal conductor clamp with expansion plug	0.134
G305	L-250 drive-in universal conductor clamp with expansion plug	0.145

**Material:** S235 steel

**Protection:** hot-dip galvanized

### U-bolt tension connector

G502



**Application:**

Used to tension the lightning conductor along the vertical wall of a building.

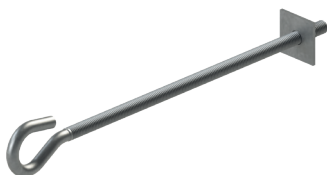
Cat. no.	Name	Weight [kg]
G502	U-bolt tension connector	0.280

**Material:** S235 steel

**Protection:** hot-dip galvanized

### M12 tension hook bolt

G503



**Application:**

Used to tension the lightning conductor along the vertical wall of a building.

Cat. no.	Name	Weight [kg]
G503	M12 tension hook bolt	0.378

**Material:** S235 steel

**Protection:** hot-dip galvanized

*Wall-mounted conductor clamp for flat steel tape*

G9025



**Application:**

Used to attach a flat steel tape on the walls of a building.

Cat. no.	Name	Weight [kg]
G9025	Wall-mounted conductor clamp for flat steel tape 25x3, 25x4, 30x3, 30x4	0.043
G9025/50	Wall-mounted conductor clamp for flat steel tape 40x5, 50x4, 50x5	0.101

**Material:** S235 steel

**Protection:** hot-dip galvanized

*Lightning conductor bracket for tensioning systems*

G903



**Application:**

Used to tension the lightning conductor along the vertical wall of a building.

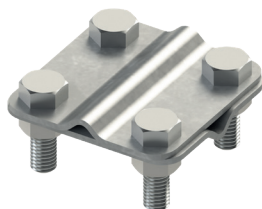
Cat. no.	Name	Weight [kg]
G903	Lightning conductor bracket for tensioning systems - straight	0.666
G90	Lightning conductor bracket for tensioning systems - drive-in	0.853
G901	Lightning conductor bracket for tensioning systems - reinforced	0.722

**Material:** S235 steel

**Protection:** hot-dip galvanized

*Cross clamp*

G40



**Application:**

In lightning protection system connections.

Cross-connecting of round or flat steel tapes; maximum tape width: 35 mm.

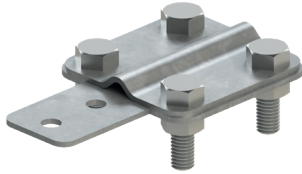
Cat. no.	Name	Weight [kg]
G40	Four-bolt cross clamp for flat steel tapes 25x4, 30x4	0.189
G40/50	Large four-bolt cross clamp for flat steel tapes 40x4, 40x5, 50x4, 50x5	0.295

**Material:** S235 steel

**Protection:** hot-dip galvanized

### Inspection connector

G50



**Application:**

In lightning protection system connections. Used to connect the lightning conductor the flat steel tape, can be disconnected to allow resistance measurement.

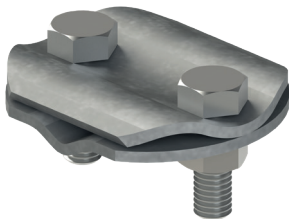
Cat. no.	Name	Weight [kg]
G50	Inspection connector	0.197

**Material:** S235 steel

**Protection:** hot-dip galvanized

### Universal two-bolt connector

G70



**Application:**

In lightning protection system connections. Cross, double-outlet, and branched connections of round or flat steel tape.

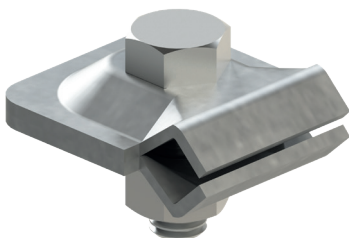
Cat. no.	Name	Weight [kg]
G70	Universal two-bolt connector	0.138

**Material:** S235 steel

**Protection:** hot-dip galvanized

### Single-bolt connector

G701



**Application:**

In lightning protection system connections. Cross, double-outlet, and branched connections of the lightning conductor wire.

Cat. no.	Name	Weight [kg]
G701	Universal single-bolt connector	0.057

**Material:** S235 steel

**Protection:** hot-dip galvanized

Inspection doors

DR150



**Application:**

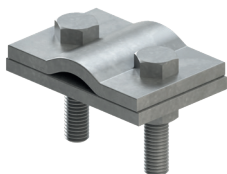
Used to cover inspection connections. Used when the supply cables are installed under the facade.

Cat. no.	Name	Weight [kg]
DR150	Inspection doors 150x150	0.490
DR200	Inspection doors 200x200	0.800
DR300	Inspection doors 300x300	1.430
DR400	Inspection doors 400x400	2,320

**Material:** UV-resistant and weatherproof plastic

ŻUK-type connector

K64



**Application:**

Used in lightning protection system connections – for connecting the lightning conductor and flat steel tape.

Cat. no.	Name	Weight [kg]
K64	ŻUK-type connector	0.428

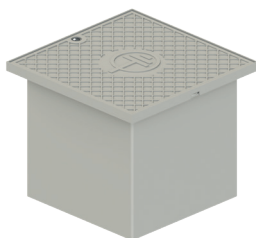
**Material:** S235 steel

**Protection:** hot-dip galvanized



Earth test boxes (drive-over type)

SK30



**Application:**

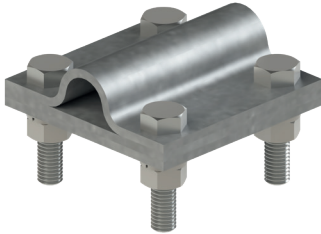
Used to connect the earthing probe to the flat steel tape. They enable easy inspection of connections and measurement of earthing resistance.

Cat. no.	Name	Weight [kg]
SK30	Test box 200x200x165 with bottom	0.685
SK31	Test box 200x200x165 without bottom	0.645

**Material:** UV-resistant and weatherproof plastic

## Earthing cross conductor clamp UKU

G9033 / G9043 / G9053



### Application:

Earthing is used to achieve the lowest possible resistance, ensure the discharge of the main lightning current, and allow for periodic inspection testing of the earthing system.

### Construction:

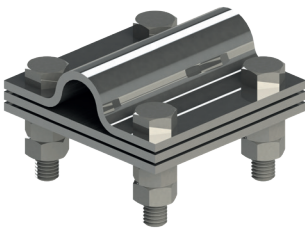
ALPAR's earthing system consists of:

- G9031 / G9041 / G9051 – ground rod tip
- G9032 / G9042 / G9052 – earthing rod
- G9032/G / G9042/G / G9052/G – rod earthing electrode + tip
- G9033 / G9043 / G9053 – cross conductor clamp

The rod tip and earthing rod are made of steel, typically with a diameter of 16 mm. Diameters of 18 mm and 20 mm are also available. The cross conductor clamp is made of profiled steel flat bar with a thickness of 3 mm. All components are protected against corrosion through hot-dip galvanizing in accordance with the PN-EN ISO 1461:2011P standard. Zinc coatings are applied to the steel using the batch hot-dip galvanizing method.

## Earthing cross conductor clamp (stainless steel)

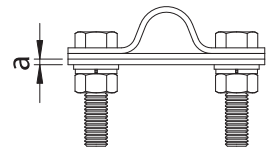
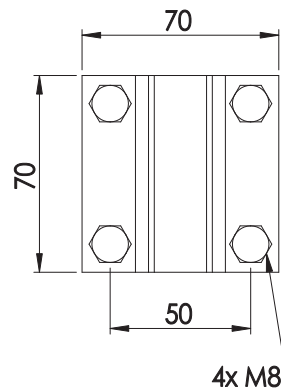
G9033N / G9043N / G9053N



Cat. no.	Name	Rod diameter	Sheet thickness [a]	Weight [kg]
G9033	Earthing cross conductor clamp UKU	Ø16	3	0.465
G9033N	Earthing cross conductor clamp UKU (stainless steel)	Ø16	2	0.335
G9043	Earthing cross conductor clampy UKU	Ø18	3	0.469
G9043N	Earthing cross conductor clamp UKU (stainless steel)	Ø18	2	0.340
G9053	Earthing cross conductor clamp UKU	Ø20	3	0.455
G9053N	Earthing cross conductor clamp UKU (stainless steel)	Ø20	2	0.341

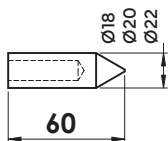
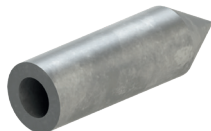
**Material:** S235 steel and/or stainless steel

**Protection:** hot-dip galvanized / acid-resistant steel



Tip for earthing rods

G9031 / G9041 / G9051



Cat. no.	Name	Rod diameter	Weight [kg]
G9031	Tip for earthing rods GU	Ø16	0.070
G9041	Tip for earthing rods GU	Ø18	0.107
G9051	Tip for earthing rods GU	Ø20	0.104

**Material:** steel with appropriate mechanical strength  
**Protection:** hot-dip galvanized in accordance with PN-EN 1461 standard

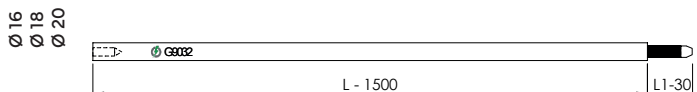
Earthing rod

G9032 / G9042 / G9052

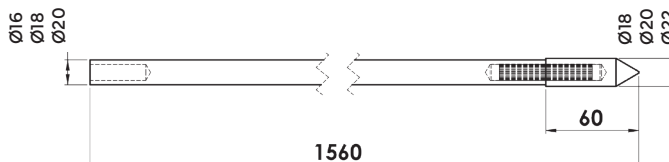


Cat. no.	Name	Rod diameter	Weight [kg]
G9032	UP16/1500 earthing rod	Ø16	2.45
G9032/G	UP16/1500 earthing rod + rod tip	Ø16	2.50
G9042	UP18/1500 earthing rod	Ø18	3.10
G9042/G	UP18/1500 earthing rod + rod tip	Ø18	3.15
G9052	UP20/1500 earthing rod	Ø20	3.75
G9052/G	UP20/1500 earthing rod + rod tip	Ø20	3.85

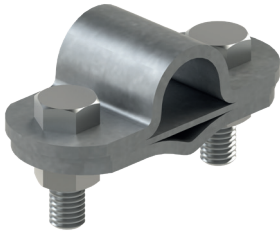
**Material:** steel with appropriate mechanical strength, the spigot is made of hardened C45 steel (L1-30).  
**Protection:** hot-dip galvanized in accordance with PN-EN 1461 standard



G9032/G / G9042/G / G9052/G



G9023



Cat. no.	Name	Weight [kg]
G9023	Earthing probe terminal	0.162

**Material:** S235 steel**Protection:** hot-dip galvanized

### Driving head for earthing rods

G9026

**Application:**

Driving head for earthing rods G9027 and G9028 are used for driving earthing rods with diameters of 16 mm, 18 mm, and 20 mm using impact hammers. Driving head for earthing rods G9026 is designed for driving earthing rods using manual hammers.

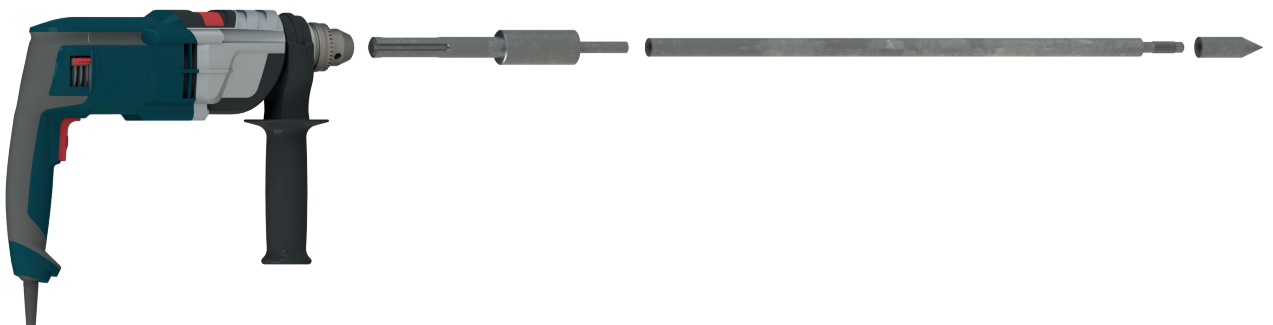
**Material:**

Heat-treated tool steel.

**Usage:**

The driving head for earthing rods are mounted onto standard chisels of impact hammers. They are compatible with all types of earthing rods manufactured by ALPAR. The driving head for earthing rods, mounted on the impact hammer, is inserted into the opening of the earthing rod with its striking pin. Once the hammer is activated, the rod is driven into the ground to the desired depth.

Cat. no.	Name	Rod diameter	Weight [kg]
G9026/16	Manual driving head for earthing rods	Ø16	0.163
G9026/18-20	Manual driving head for earthing rods	Ø18 and Ø20	0.178



G9027  
G9029



Cat. no.	Name	Rod diameter	Weight [kg]
G9027	SDS MAX mechanical driving head for earthing rods	Ø16	0.933
G9029	SDS MAX mechanical driving head for earthing rods	Ø18 and Ø20	0.944

G9028



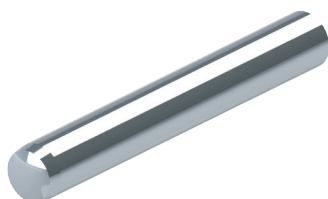
Cat. no.	Name	Rod diameter	Weight [kg]
G9028	Hexagonal mechanical driving head for earthing rods	Ø16	0.511
G9028/18	Hexagonal mechanical driving head for earthing rods	Ø18 and Ø20	0.522

G9028H



Cat. no.	Name	Rod diameter	Weight [kg]
G9028H	HEX 28 mechanical driving head for earthing rods	Ø16	1.10

T10x90  
T12x90

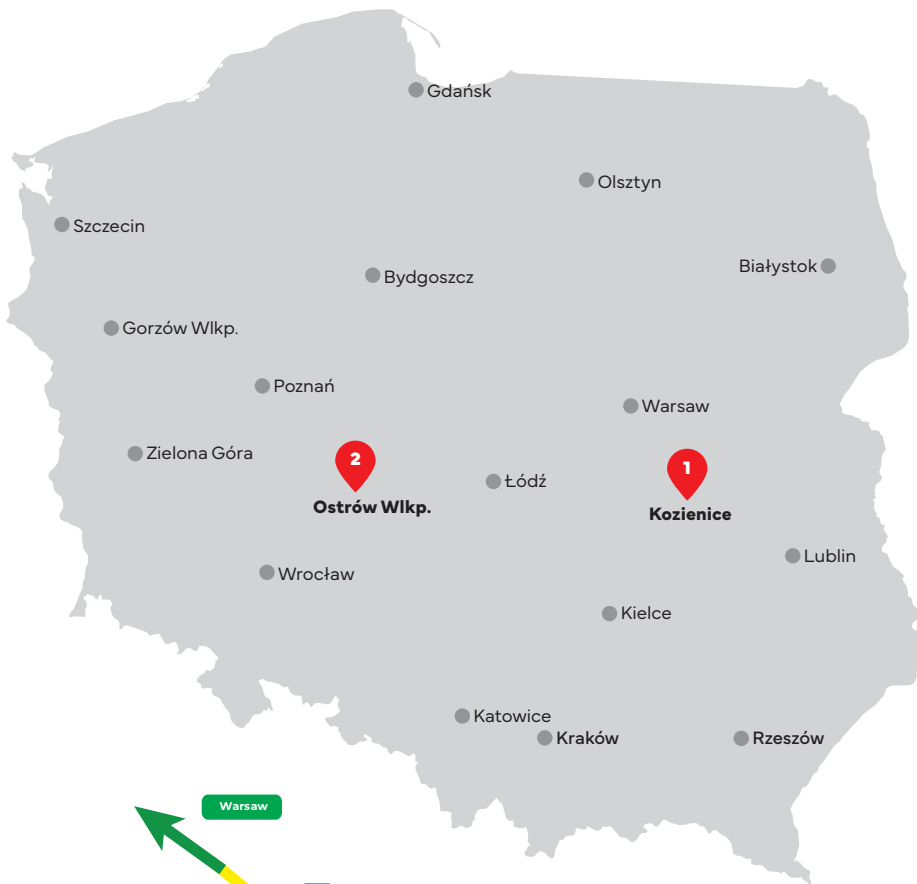


Cat. no.	Name	Rod diameter	Weight [kg]
T10x90	Striking pin for driving head for earthing rods	Ø16	0.052
T12x90	Striking pin for driving head for earthing rods	Ø18 and Ø20	0.078









**ALPAR - HEADQUARTERS**  
Łuczynów 98  
26-900 Kozienice, Poland  
phone: +48 48 614 6114



**ALPAR - SALES OFFICE**  
Nowa 8A  
63-400 Ostrów Wielkopolski, Poland  
phone: +48 530 906 662  
+48 530 244 868





**HEADQUARTERS:**

Łuczynów 98 | 26-900 Kozienice, Poland  
phone: +48 48 614 61 14

**SALES OFFICE:**

Nowa 8A | 63-400 Ostrów Wielkopolski, Poland  
phone: +48 530 906 662 | +48 530 244 868

**[www.alpar.pl](http://www.alpar.pl)**

email: sekretariat@alpar.pl