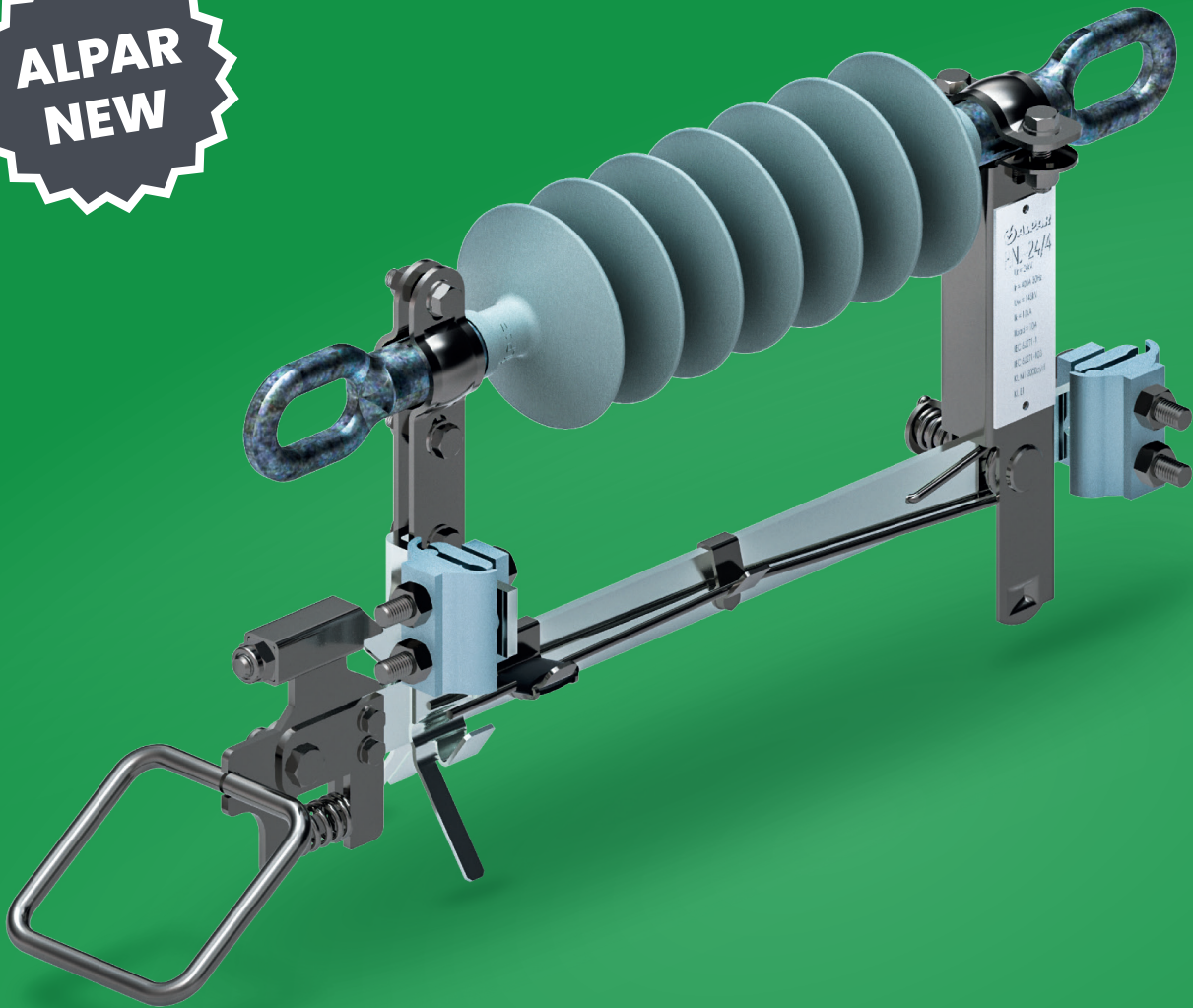


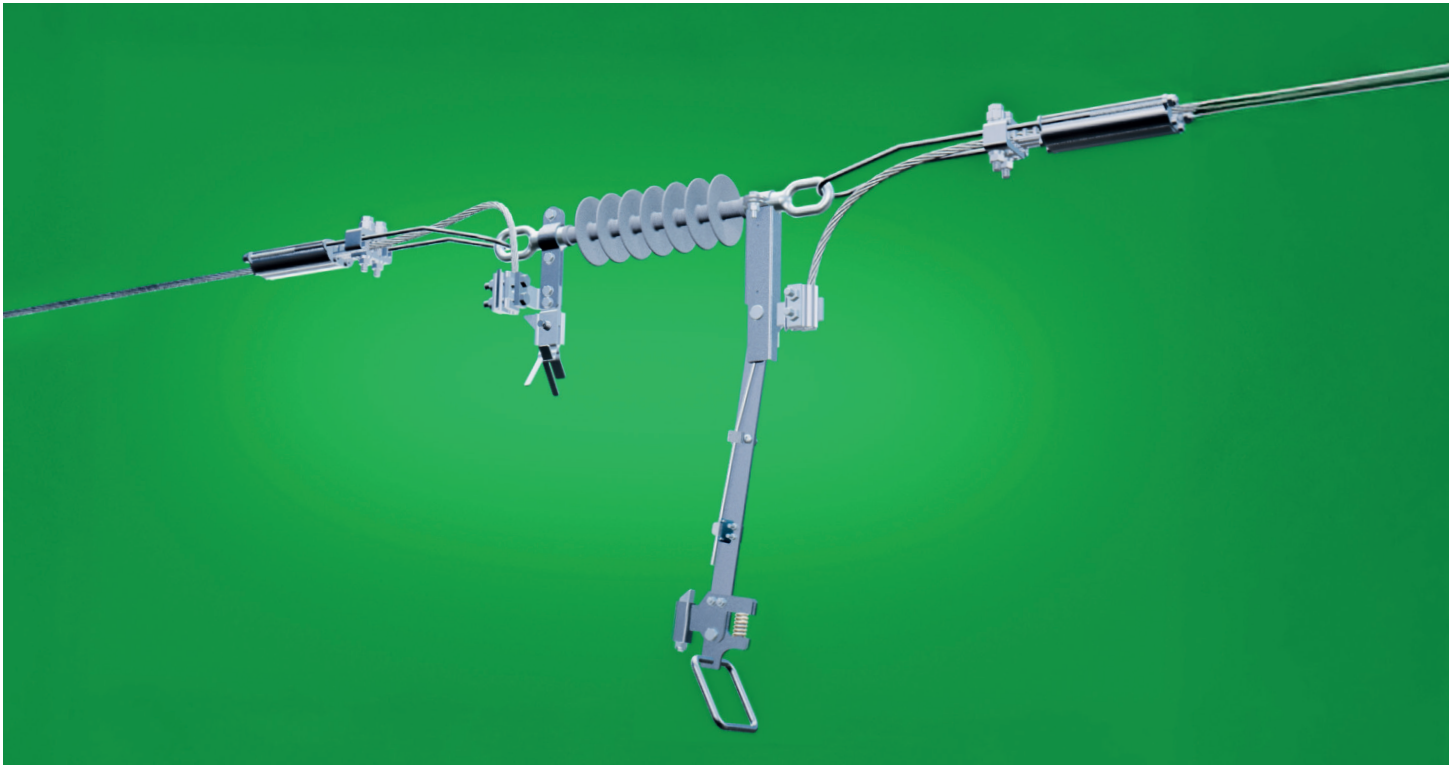
**ALPAR
NEW**



Single-pole overhead switch- disconnecter type RNJ-24/4

For operation in medium-voltage lines,
primarily to provide a visible isolation gap
in the circuit and for emergency disconnection
of damaged line sections.

Key advantages – RNJ-24/4 switch-disconnector



One operating lever instead of two

Enables faster and easier insertion of the insulating operating rod into the device holder.



Clearly visible air gap

Allows clear confirmation that the circuit is disconnected and safe.



Emergency disconnection of line sections

Allows quick and safe disconnection of the circuit using an insulating operating rod from ground level or from a mobile elevating work platform.



Spring-operated mechanism

Facilitates simple and reliable opening and closing of the device for the installer.



Uncompromising durability

The switch-disconnector has successfully passed endurance tests in mechanical class M1 (2000 operating cycles).

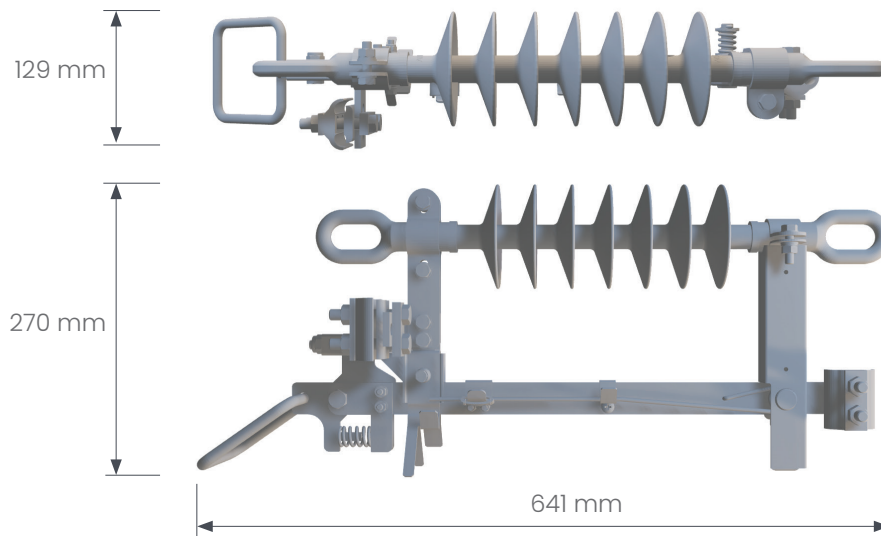


Faster and more convenient operation

Operation is smoother and allows confident handling even in difficult terrain conditions.

Technical data

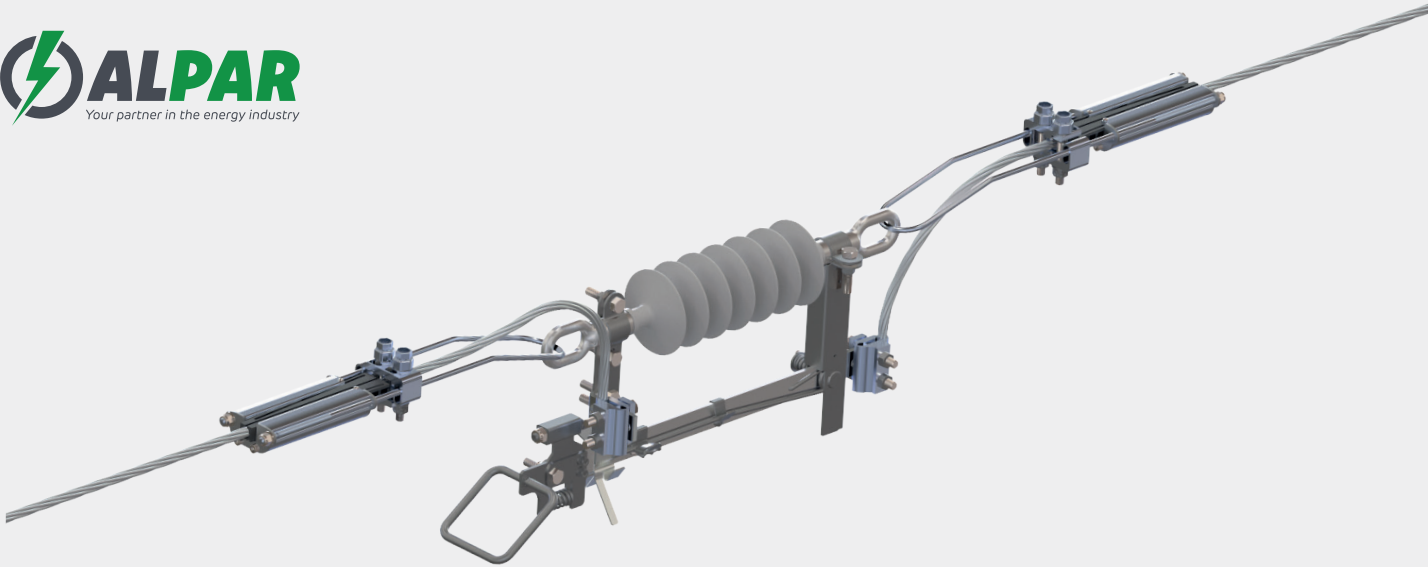
Single-pole overhead switch-disconnector type RNJ-24/4



Rated voltage	(U_r)	24 kV
Rated frequency	(f_r)	50 Hz
Number of phases		1
Rated power-frequency withstand voltage	(U_d)	60 kV *
Rated lightning impulse withstand voltage	(U_p)	145 kV *
Rated current	(I_r)	400 A
Rated peak withstand current	(I_p)	25 kA
Rated short-time withstand current	(I_k)	10 kA / 1 s
Rated breaking current in a low-inductance circuit	(I_{load} / number of cycles)	10 A / 5 cycles
Rated overhead line breaking current	(I_{lc})	10A
Rated cable charging current	(I_{cc})	10A
Ice thickness class		10 mm **
Type of operating mechanism		manual (via operating rod)
Operating conditions – outdoor installation		-40°C/+40°C
Electrical class of the switch-disconnector		E1
Mechanical endurance class		M1: 2000 cycles C-O
In accordance with the requirements of the standards		IEC 62271-103:2024-04; PN-EN IEC 62271-1:2018-02; PN-EN IEC 62271-1:2018-02-A1:2022-06

* Along the insulating surface

** In accordance with Clause 7 of PN-EN IEC 62271-102:2018-10



Intended use

For operation in medium-voltage lines, mainly to provide a visible isolation gap in the circuit and for emergency disconnection of damaged line sections.

Conductor type

A switch-disconnector installed in overhead lines for bare conductors with cross-sections ranging from 35 mm² to 120 mm².

Method of mounting

The switch-disconnector is mounted to the conductors using two UO 70.1 strain clamps.

Head Office:

Łuczynów 98 | 26-900 Kozienice
phone: +48 48 614 61 14

Sales Office:

ul. Nowa 8A | 63-400 Ostrów Wielkopolski
phone: +48 530 906 662 | +48 530 244 868

email: sekretariat@alpar.pl